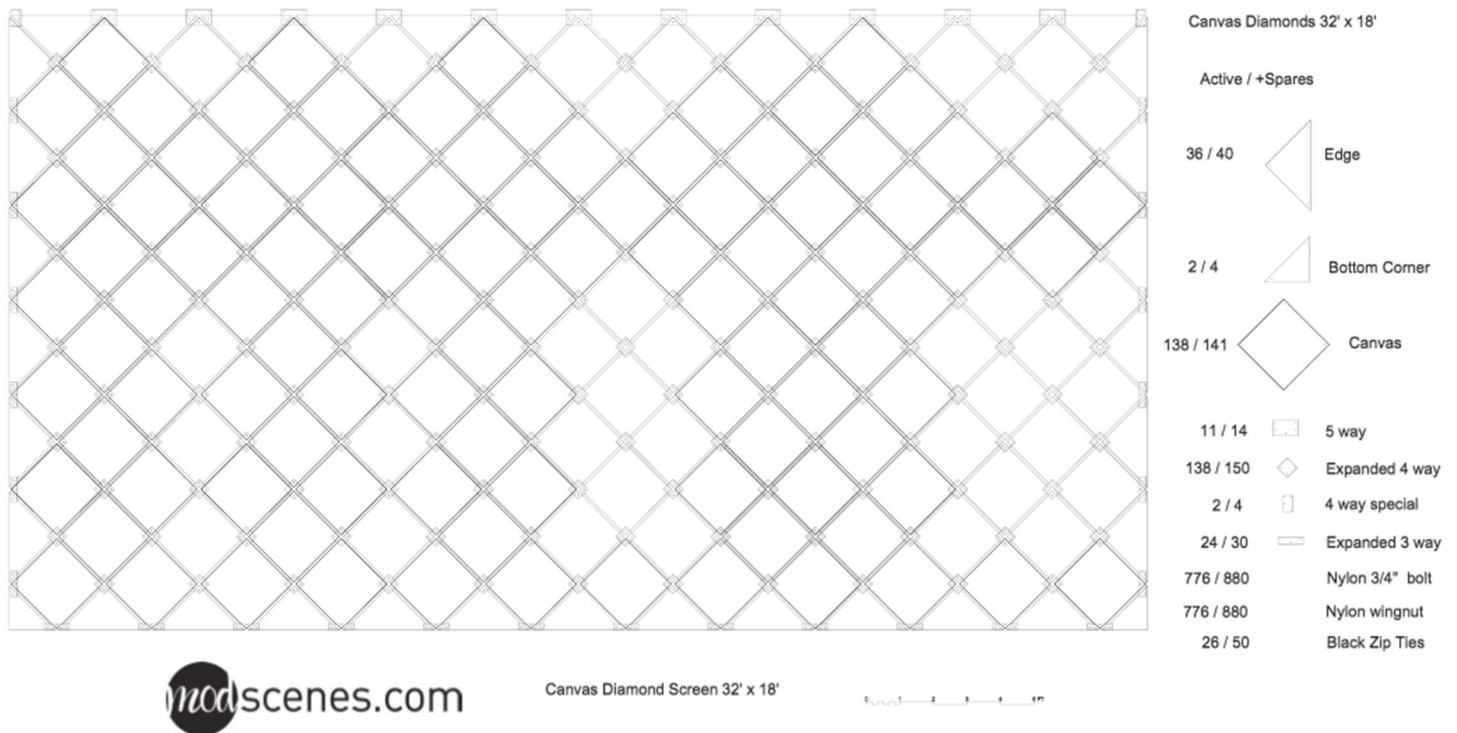


Canvas Diamond Screen Build Instructions

Congratulations on your purchase of the supremely awesome Canvas Diamond Projection Screen!
This incredible projection surface is sure to cause a scene!

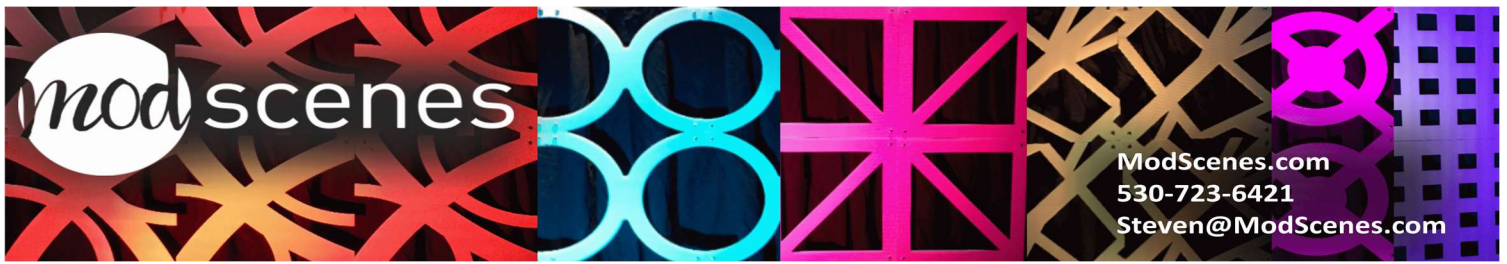


1 Canvas 32' x 18'
Scale: 1/4" = 1'-0"

A few things to note before building:

- Everything should be built using no tools
- You will have extra parts, those are spares
- Your first row is the most important, make sure your first row is very level and the rest will be easy.

(Continued)



Step 1:

Use tieline (or zipties) to hang 5 way and 4 way special connectors that your panels will attach to. 5 way connectors will be used in the middle of your screen with the 4 way special connectors being used on the ends of your screen.

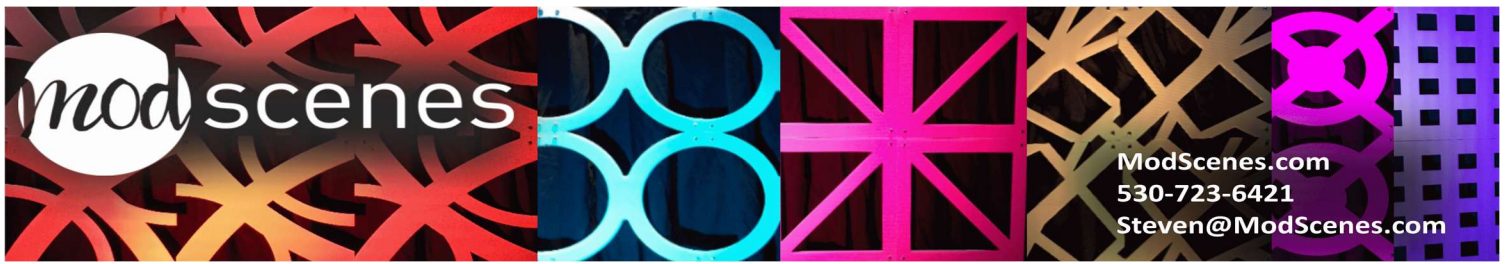


Or

Utilize our Pipe and Drape Clamps to hang on top of standard pipe and drape. Our pipe and drape hangers are bendable and can bend to fit larger pipes including truss. Make certain to bend all clamps back to their original shape before attaching connectors. When using our pipe and drape hangers, use the provided black nylon bolts to connect through the hangers and connector. Secure these together by fastening a black nylon wingnut to the black nylon bolt.

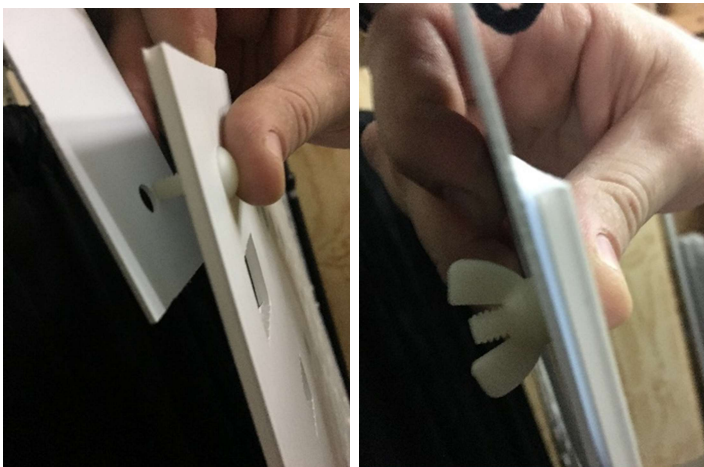
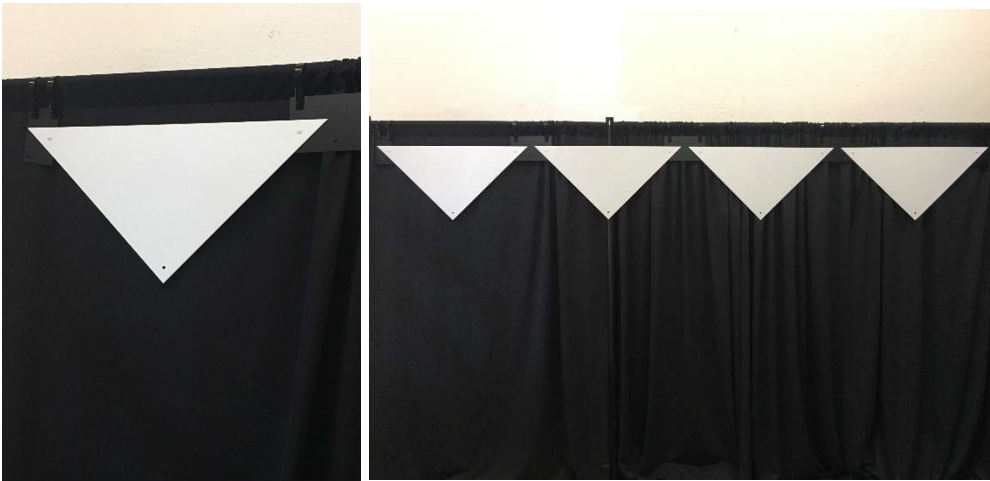


(Continued)

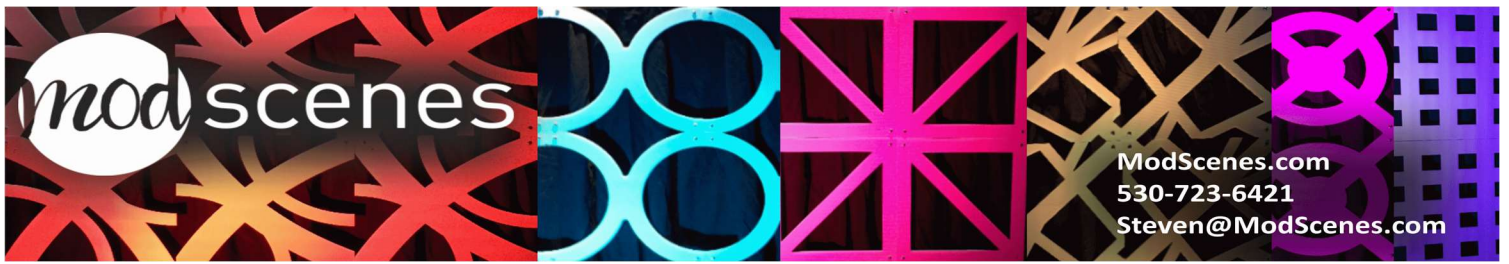


Step 2:

Attach your first row of edge panels to your connectors. Ensure that the top row of panels connects both side to side with the other panels and vertically to your hangers (as shown below). Make sure your hangers are level to ensure a seamless build all the way to the floor. The number of total edge panels you will need will depend on your screen size. See the accompanying



(Continued)



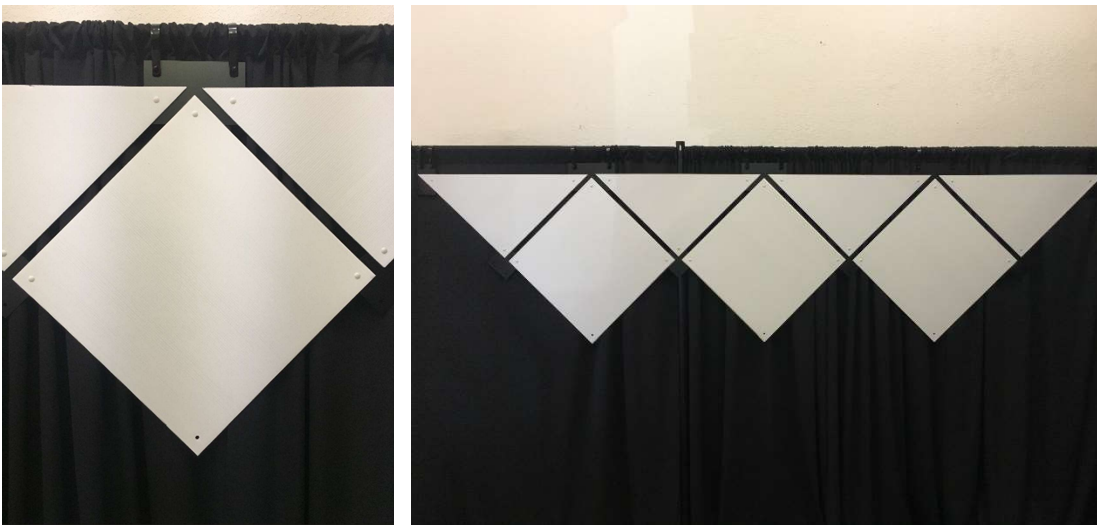
Step 3:

Once your first row of panels is completed you will add a row of connectors on the bottom half of that row of design panels. Utilize 3 way connectors on the edges and 4 way connectors in the center. Once this row of connectors is added every bolt hole in the design panel should be filled.

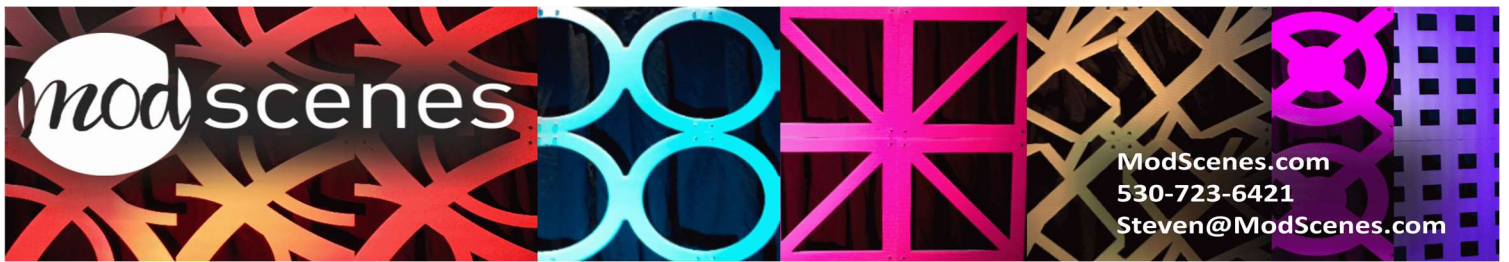


Step 4:

Hang additional Canvas Design panels to the connectors that were just added. The top of these panels will connect to the bottom of the previous row of connectors.



(Continued)



Step 5:

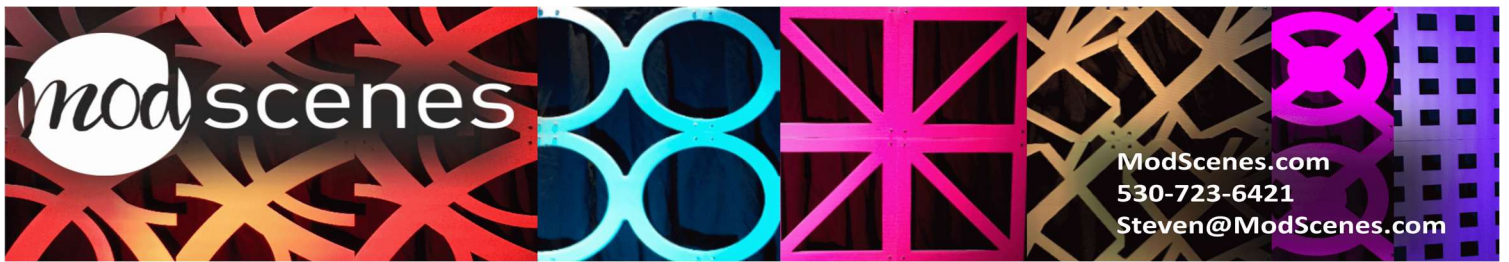
Hang additional edge panels to the 3 way connectors added in step 3. The top of these panels will connect to the bottom of the previous row of connectors.



Step 6: Repeat steps 3-5 until you reach your needed height. See your accompanying drawing for the amount of rows needed.

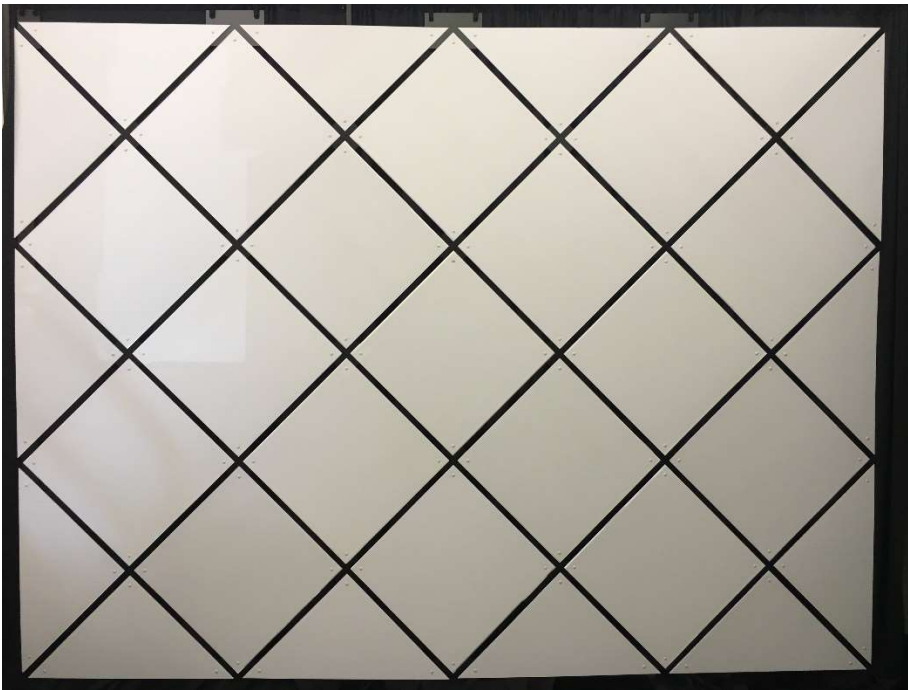


(Continued)



Step 7:

To start your last row, attach edge panels (and bottom corner panels if needed) to your last row of connectors.



Step 8:

Add 3 way connectors (and 2 way, where needed) along the bottom row of panels.



Step 9: Create a Scene with your finished Screen!